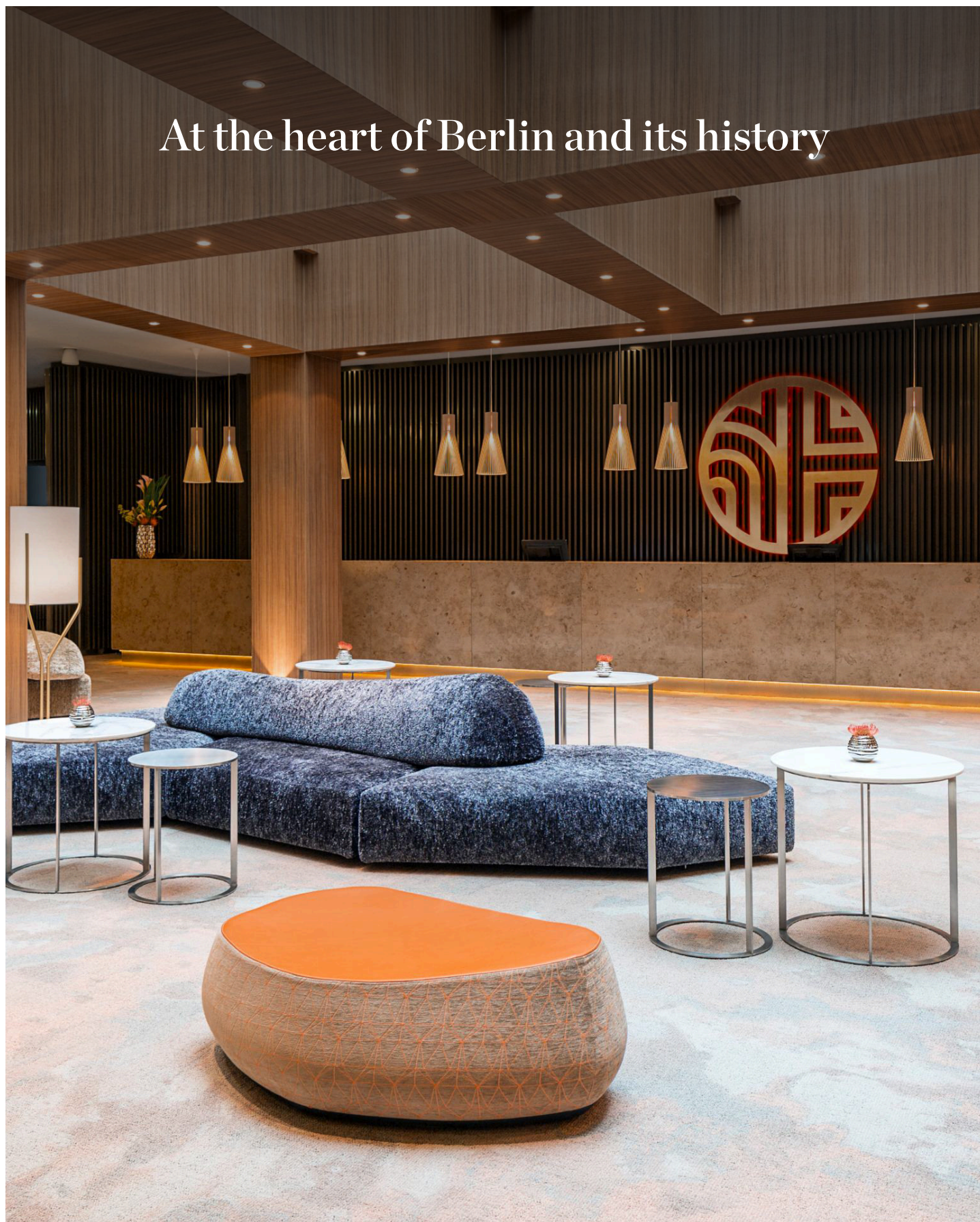


At the heart of Berlin and its history



NH COLLECTION

BERLIN • MITTE



Location

Located in the centre of the German capital, the NH Collection Berlin Mitte am Checkpoint Charlie offers an elegant ambience and easy access to public transport. The headquarters of well-known companies, city sights and the popular shopping location of Friedrichstraße are only a few steps away.

The central location by Checkpoint Charlie in the vibrant Berlin-Mitte district provides a perfect setting for any event. The Brandenburg Gate and Potsdamer Platz are within easy walking distance. The nearby U-Bahn station takes you and your guests straight to the airport and the hotel, as well as the trade fair centre and all Berlin event venues. Our flexible meeting rooms provide space for individual events and are partially accessible by car.

Our hotel is committed to sustainability and has been awarded ISO 14001 and Bioscore certification.

ADDRESS

NH Collection Berlin Mitte am
Checkpoint Charlie
Leipziger Str. 106-111
10117 Berlin
Germany

[Map view](#)

CONTACT FOR BOOKINGS

groupsales.de@minor-hotels.com
+49 30 2238 5017

nh-collection.com

DISTANCES

Airport
23 km (Berlin Brandenburg)

[Map view](#)

Central station
2 km

[Map view](#)

Trade fair
8 km (ICC)

[Map view](#)

City centre
0 m

[Map view](#)

Public transport
Subway 80 m
Tram 1 km
Bus 100 m

[Map view](#)

Rooms

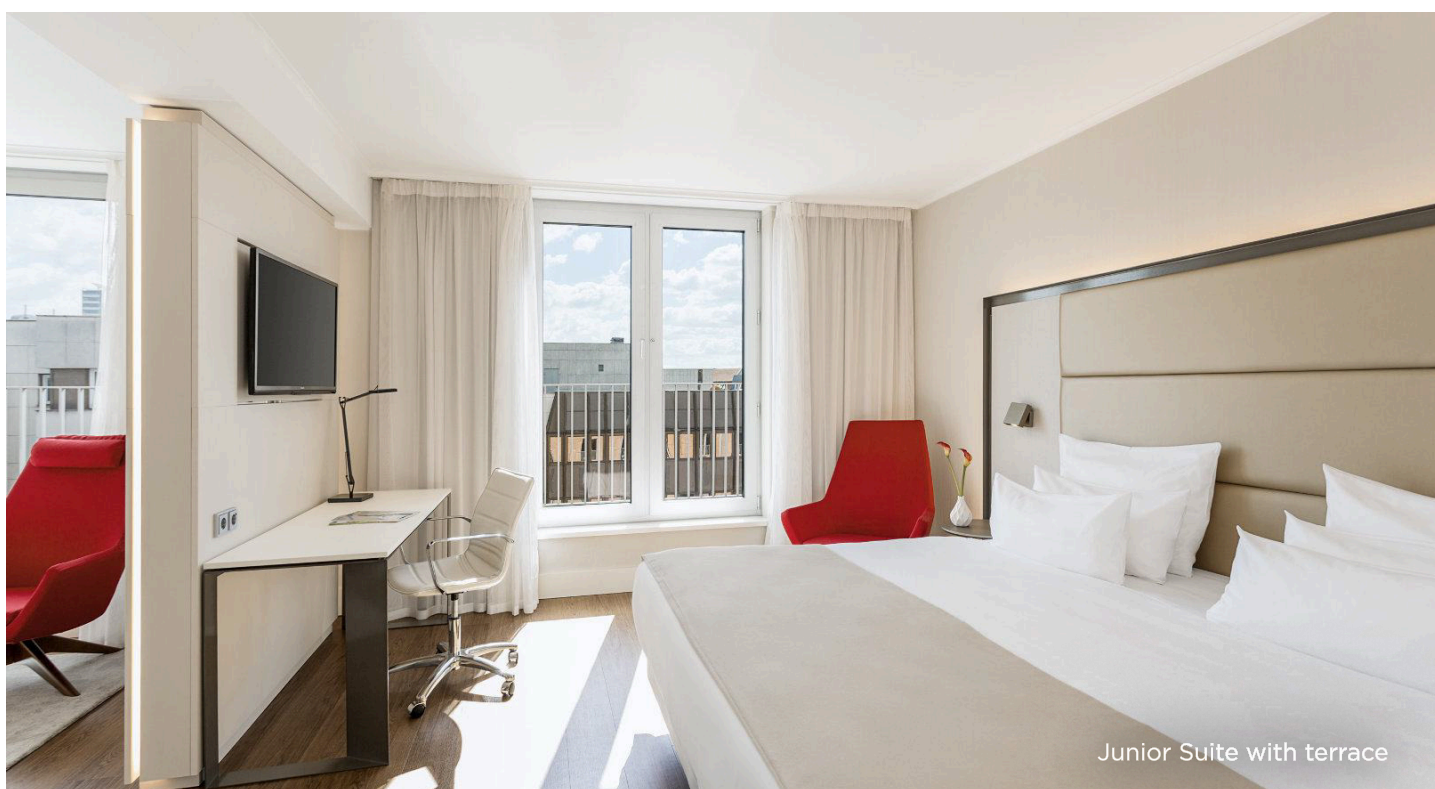
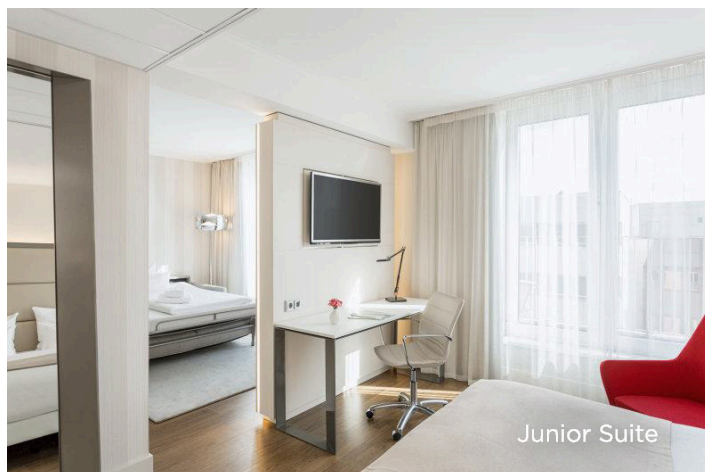
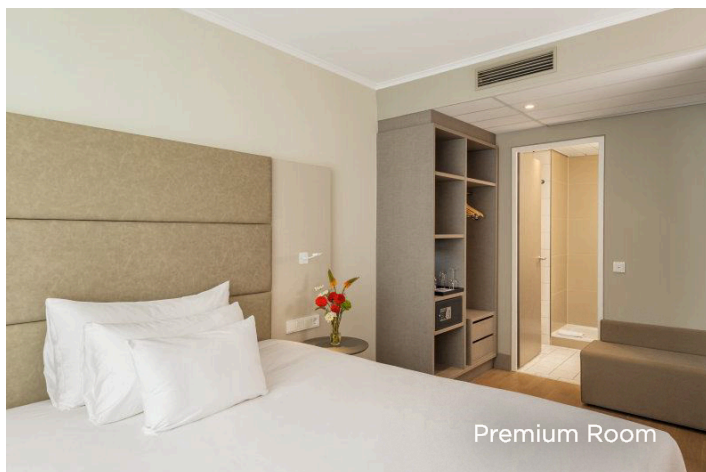
Our 392 guest rooms and suites are elegantly furnished and offer all kinds of comfort and well-thought-out amenities. The stylish furnishings include an LED Smart TV, a Nespresso machine, a safe, a minibar and free high-speed WiFi. The rain shower in the bathroom is ideal for indulging in a little relaxation.

The mattresses, which have been designed exclusively for the NH Collection, and a wide range of different pillows ensure a good night's sleep. The soft tones and striking colour accents of the interior design exude a subtle, contemporary charm.

Room type

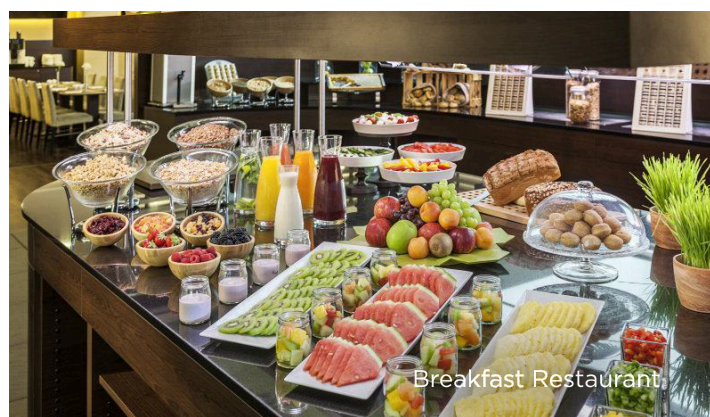
N° Rooms

Superior Double Rooms – 20-23 m ²	113
Premium Rooms – 20-23 m ²	249
Junior Suites – 43 m ²	19
Junior Suites with terrace – 43 m ²	9

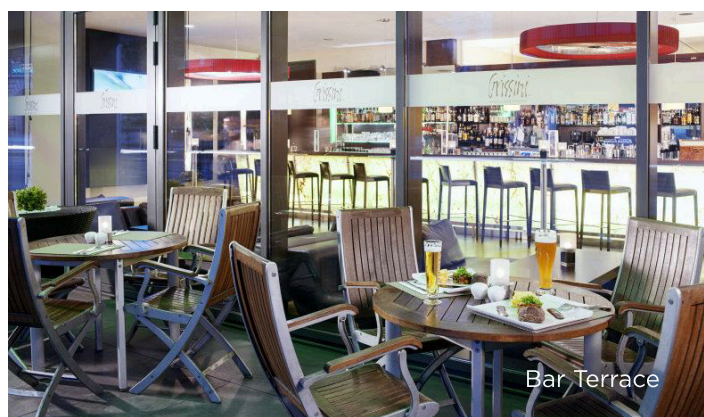




Bar Grissini



Breakfast Restaurant



Bar Terrace

Restaurants and bars

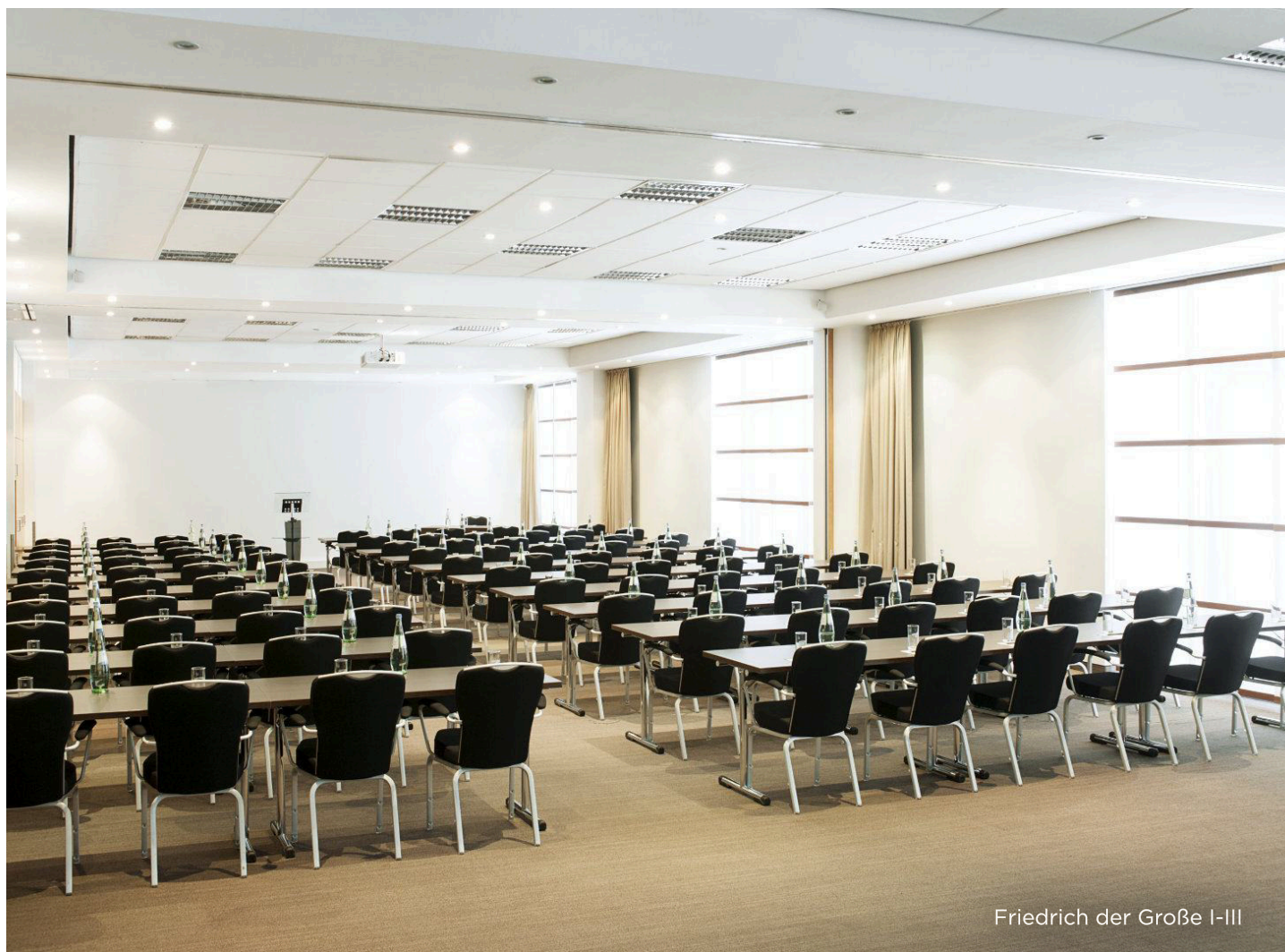
The NH Collection Berlin Mitte am Checkpoint Charlie has a wide range of culinary experiences in store for you. Wherever you want to treat yourself and your guests – in our restaurant, Bar Grissini with its terrace or in the event area itself – we'll be happy to accommodate exactly what you're looking for.

Our restaurant – seats 180 in a modern interior

In the morning, our restaurant presents you with a hearty breakfast that leaves nothing to be desired. At lunchtime and in the evening you can look forward to international specialities and Mediterranean classics à la carte, created from regional ingredients. A live cooking station transforms every restaurant visit into an impressive experience, and the option of separating areas of the restaurant ensures a private and friendly atmosphere even in large groups. In combination with our lounge bar, Grissini, we can host up to 250 guests.

Bar Grissini with terrace – a meeting place for up to 70 guests

The perfect place to bring the day to a relaxed close. Enjoy a wide selection of sophisticated drinks and delicious snacks in a chilled-out atmosphere with good music in our lounge bar. In the spring and summer months, our arcade terrace offers you a wonderful view of the hustle and bustle of Berlin.



Friedrich der Große I-III









Meetings and events

Inspiring events in an atmosphere bathed in light: with 15 flexible event rooms, the NH Collection Berlin Mitte am Checkpoint Charlie offers varied options for successful meetings and private or company parties. 3 rooms are accessible by car and can be combined into a spacious total area of 230 square metres.

All event rooms have been equipped with state-of-the-art audiovisual technology to ensure your event runs perfectly – whether it's a video conference with interpreters or the set-up for an in-person conference. Together with our chef, we'll compose the ideal menu for your guests. We'd also be happy to add an original and very special touch to your coffee breaks.

To gain a more detailed impression, take a look at our event rooms in 3D and simply adapt them to your individual needs: [Design now!](#)

Meeting rooms, including capacities

Meeting room	Height (m)	Area (m²)	Floor	 Cocktail	 Square	 Banquet	 Classroom	 Theatre	 U-Shape	 Cabaret	 Circle of chairs	Car-accessible*	Daylight
Friedrich der Große I	3.1	100	Ground floor	75	40	56	60	100	30	45	32	Yes	Yes
Friedrich der Große II	3.1	65	Ground floor	45	24	40	35	50	20	30	26	Yes	Yes
Friedrich der Große III	3.1	65	Ground floor	45	24	40	35	50	20	30	26	Yes	Yes
Friedrich der Große I + II	3.1	165	Ground floor	100	–	100	90	150	50	65	52	Yes	Yes
Friedrich der Große II + III	3.1	130	Ground floor	100	–	80	80	90	40	55	52	Yes	Yes
Friedrich der Große I–III	3.1	230	Ground floor	200	–	144	160	200	70	100	110	Yes	Yes
Yitzhak Rabin	2.5	45	1	24	16	–	20	30	14	–	16	No	Yes
John F. Kennedy	2.5	45	1	24	16	–	20	30	14	–	16	No	Yes
Ernst Reuter	2.5	45	1	24	16	–	20	30	14	–	16	No	Yes
Otto von Bismarck	2.5	45	1	24	16	–	20	30	14	–	16	No	Yes
Charles de Gaulle	2.5	45	1	24	16	–	20	30	14	–	16	No	Yes
Winston Churchill	2.5	45	1	–	8	–	–	–	–	–	–	No	Yes
Theodor Heuss	2.5	21	1	–	10	–	–	–	–	–	–	No	Yes
Konrad Adenauer	2.5	21	1	–	10	–	–	–	–	–	–	No	Yes
Willy Brandt	2.5	45	1	24	16	–	20	30	14	–	16	No	Yes
Ludwig Erhard	2.5	45	1	24	16	–	20	30	14	–	16	No	Yes
Indira Gandhi	2.5	45	1	24	16	–	20	30	14	–	16	No	Yes
Evita Peron	2.5	45	1	24	16	–	20	30	14	–	16	No	Yes

* Can be used for car presentations.
Management reserves all rights. Availability is subject to change.

For creative breaks and fresh impetus

Our upper foyer provides an ideal backdrop for breaks, presentations and stylish evening events. Encourage your guests to recharge their batteries and exchange ideas creatively in varied, comfortable lounge areas as the perfect complement to your event room. Are you planning an event with a special setting? Host up to 150 guests in the elegant atmosphere of our upper foyer and share an unforgettable evening.





Equipment

Whether it's an in-person, hybrid or virtual event, our state-of-the-art technical equipment ensures smooth processes and unforgettable presentations. If you need additional equipment for your event, we'll work together with our technology partner to perfectly implement your ideas:

- Innovative lighting and decor solutions
- Top-class media technology
- Individual show, stage and event concepts



Spa Area

Hotel services

The NH Collection Berlin Mitte am Checkpoint Charlie offers you all the amenities you would expect from a 4-star superior hotel. Enjoy a comfortable stay – we look forward to seeing you:

- Pamper yourself in the spa area with a soothing sauna, massages, treatments and a sunny balcony
- Fitness area with a wide range of equipment and machines open until 11:00 p.m.
- 82 parking places
- 9 charging stations for electric cars
- Hearty breakfast
- Early-bird breakfast for early risers
- Online check-in/check-out with FASTPASS
- Sleep in longer on Sundays with late check-out
- Fast laundry and dry cleaning service
- Free WiFi in the hotel
- Sustainable meetings and events
- For groups of up to 20 people, simply book online via Minor PRO
- Hotel buy-out: booking of the entire hotel or individual areas or floors possible

Minor DISCOVERY and the **Minor PRO Business Programme** offer loyal Minor Hotels guests exclusive benefits, unforgettable experiences and special privileges.



NH COLLECTION

HOTELS & RESORTS

NH Collection Hotels & Resorts is a Minor Hotels brand.

nh-collection.com